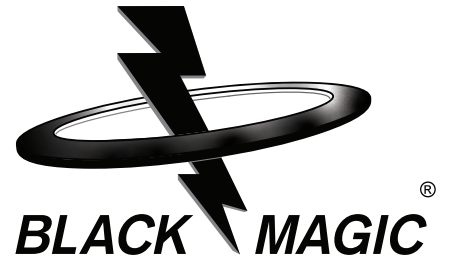


## Fastener Type

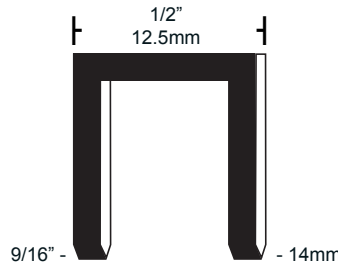
# BLACK MAGIC® HEAVY DUTY RETREAD STAPLES



### SH/05-55TR - Standard 16Ga, 9/16"

This heavy-duty staple is designed for heavy lug tires. The long leg length and the heavy gauge material allow it to penetrate and hold the thicker treads of off-road tire treads.

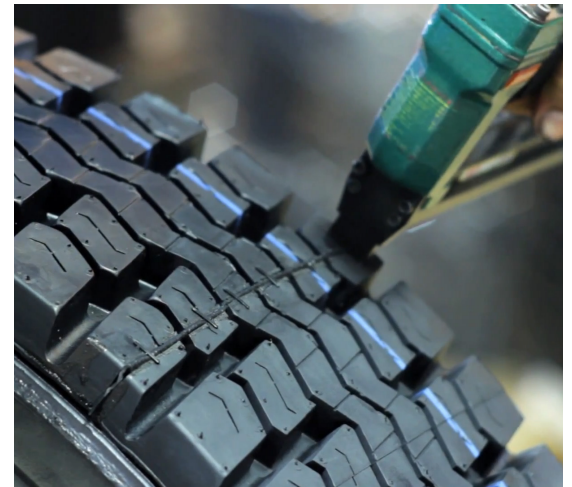
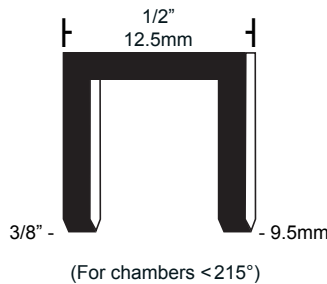
Packaging: 5040 staples per box  
20 boxes per case



### SH/05-37TR - Low Temp 16Ga, 3/8"

This low temperature staple is designed for retread cure processes that are below 215°F. The SH/05-37TR will melt at lower temperatures making it perfect for Oliver Rubber and other low temperature cure cycles.

Packaging : 5040 staples per box  
20 boxes per case



## BENEFITS

- ✓ No staple removal
- ✓ No cut or abrasion marks from removing
- ✓ No metal staples littering the floor
- ✓ Eliminates envelope punctures
- ✓ Fewer tire re-runs
- ✓ Reduces labor and material costs
- ✓ No metal staple injuries

## APPLICATIONS

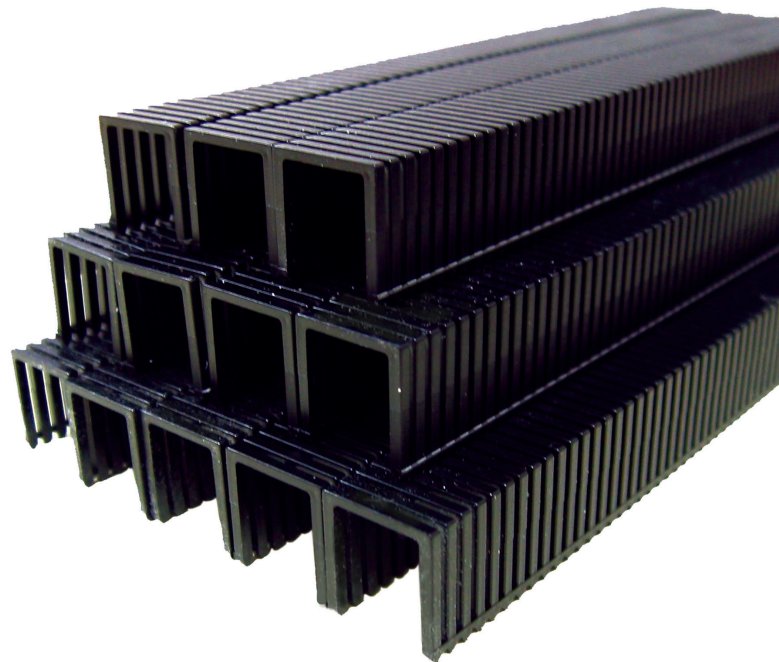
- Tire splice
- Bench splice
- Wick pad
- Poly film
- Tire tags

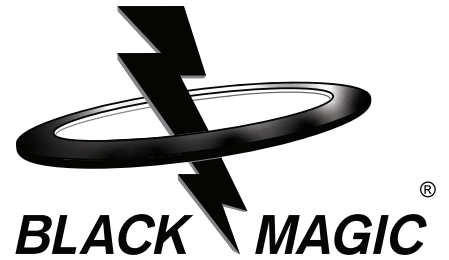
## TOOLS

- OMER 82P Series

## FEATURES

- ✓ Melts during cure cycle
- ✓ SH/05-37TR has a low melting temperature for cure chambers below 215°
- ✓ Completely non-metal





# OMER 82P SERIES STAPLER

The 82P stapler drives BLACK MAGIC®, 16 gauge, composite, tire retread staples. It is extremely fast, lightweight, well-balanced and rugged.

It is offered in a standard-length magazine and a long magazine version for operators who prefer less reloading.

The 82P is also offered with a trigger safety or with a contact trip safety to reduce the possibility of accidental firing.



## TECHNICAL DATA

Model	82P	82PS	82PCL	82PSCL
Magazine capacity	65 staples	65 staples	130 staples	130 staples
Operating air pressure	60 – 90 psi (4 – 6 bar)			
Dimensions LxWxH	8.5" x 1.7" x 5.8" (216 x 43 x 148mm)	8.5" x 1.7" x 5.8" (216 x 43 x 148mm)	13.8" x 1.7" x 5.8" (350 x 43 x 148mm)	13.8" x 1.7" x 5.8" (350 x 43 x 148mm)
Weight	2.0 lb (0.9 kg)	2.0 lb (0.9 kg)	2.4 lb (1.1 kg)	2.4 lb (1.1 kg)
Safety	Trigger	Contact	Trigger	Contact

